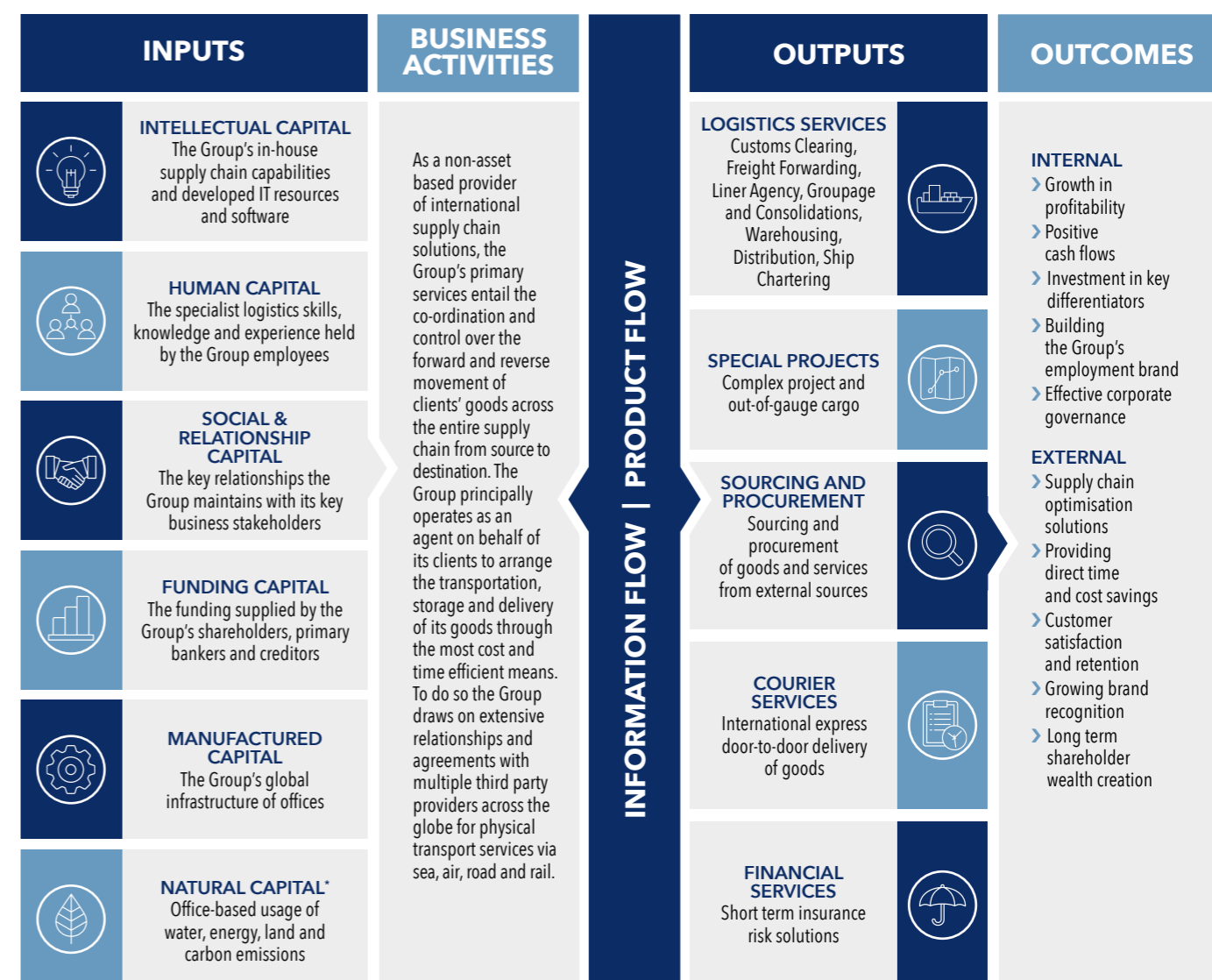
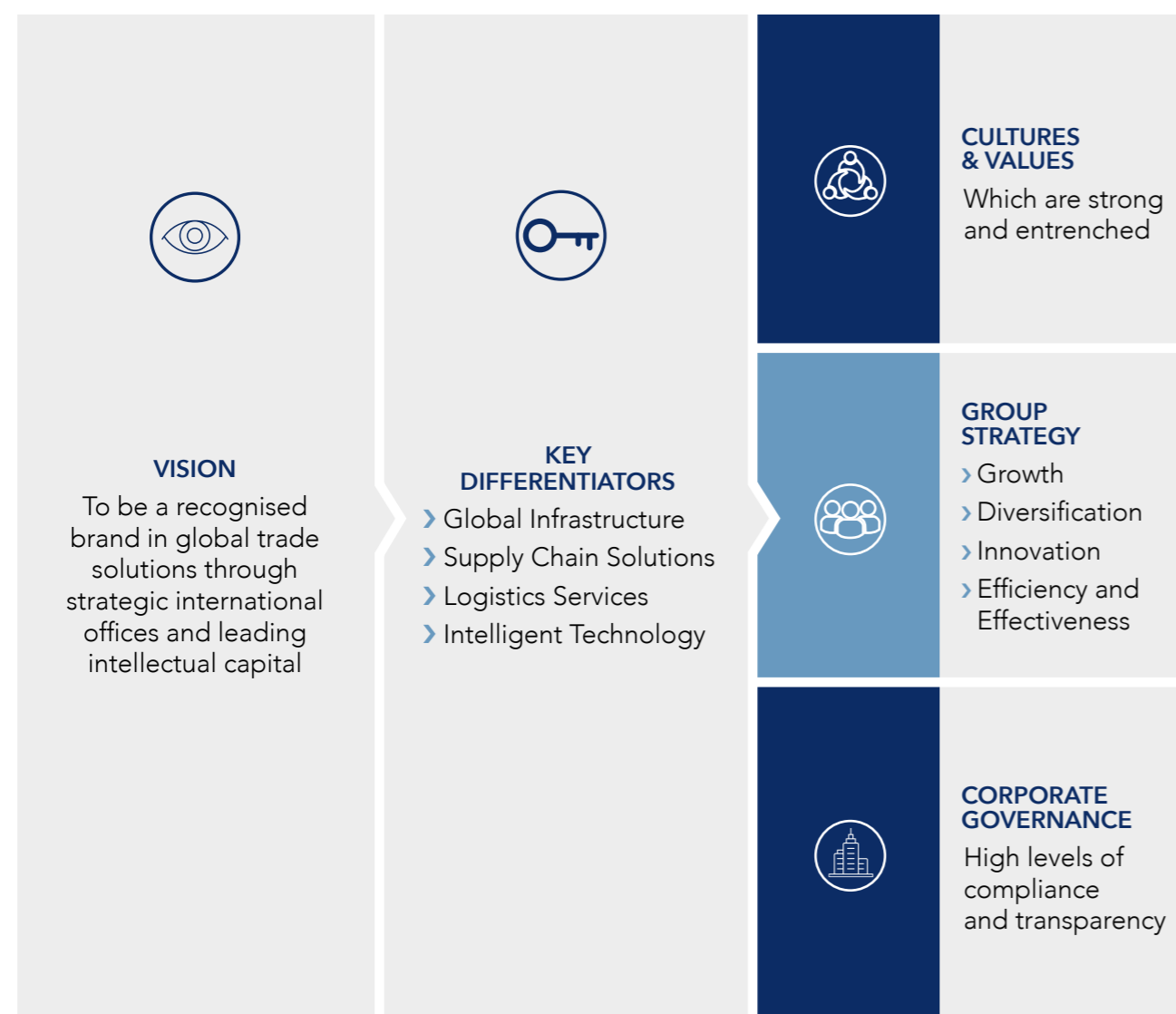
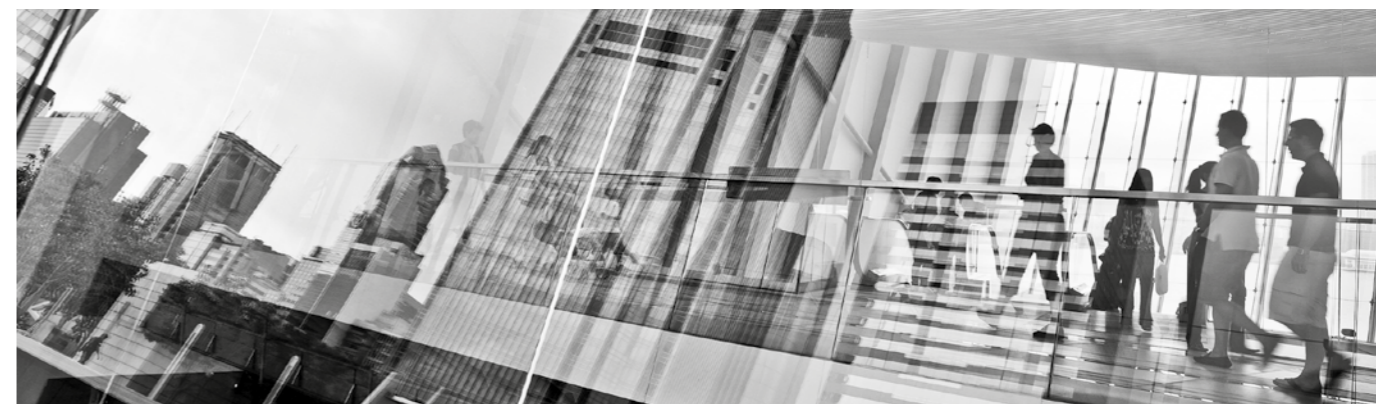


OUR BUSINESS MODEL

Santova's business model is that of an integrator that assembles the intellectual capital and technology of the Group, together with the logistics resources and capabilities of specialised external logistics providers, to design, develop and execute comprehensive supply chain solutions for customers.



AUSTRALIA >>> GERMANY >>> HONG KONG >>> NETHERLANDS

>>> SOUTH AFRICA >>> UNITED KINGDOM >>> MAURITIUS

